

Lost Lake Reel Bites

Lost Lake Community Club Newsletter

"Improvement, Promotion, Progress and Beautification"



S t . G e r m a i n , W i s c o n s i n

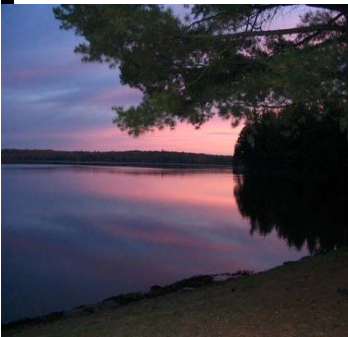
Lost Lake Volunteers Log Over 400 Hours

By: Ted Ritter, Chairman, St. Germain Town Lakes Committee, Vilas County AIS Coordinator

"Volunteers from Lost Lake are to be commended for logging 459 hours of lake inspection during 2006. Vigilant lake monitoring won't prevent the arrival of an invasive species, but it will assure early detection and enable quick response before the infestation becomes well established. Those were hours well spent.

"The first priority of lake monitoring is to achieve early detection of invasive species."

The Town Lakes Committee will continue its AIS prevention and early detection campaign in 2007. Lake monitoring and watercraft inspections volunteer hours enable the committee to recover costs associated with AIS messages printed on grocery bags, restaurant placemats and bait containers. Tighter restrictions for volunteer time will be in place for 2007 and it will be necessary for lake monitoring efforts to be better documented in order to be eligible for expense reimbursement. The Town Lakes Committee will have more information to pass along by May. Volunteers needn't be discouraged by the new rules. The first priority of lake monitoring is to achieve early detection of invasive species. Qualifying for reimbursement of expenses is secondary. The ultimate objective is for all lake users to routinely pay attention to what is living in lakes. Since becoming involved with the management of Curly-leaf pondweed and Eurasian water milfoil on Little St. Germain Lake in 2002, I cannot approach any water body without looking for suspicious plants and critters. I do so without any conscious effort. If all lake users reach that same level of awareness and monitoring, no lake will ever again develop advanced stage infestations, especially of invasive plants. It appears that Lost Lake property owners are heading in that direction, based on their 2006 monitoring efforts.



What a sight to behold !

A special thanks to Nancy and Donald Bernstein for these great pictures.

On behalf of the St. Germain Town Lakes Committee and concerned lakefront property owners throughout the area, I extend my thanks and congratulations for a job well done. Please, keep up the good work!"

Ted Ritter, Chairman

St. Germain Town Lakes Committee

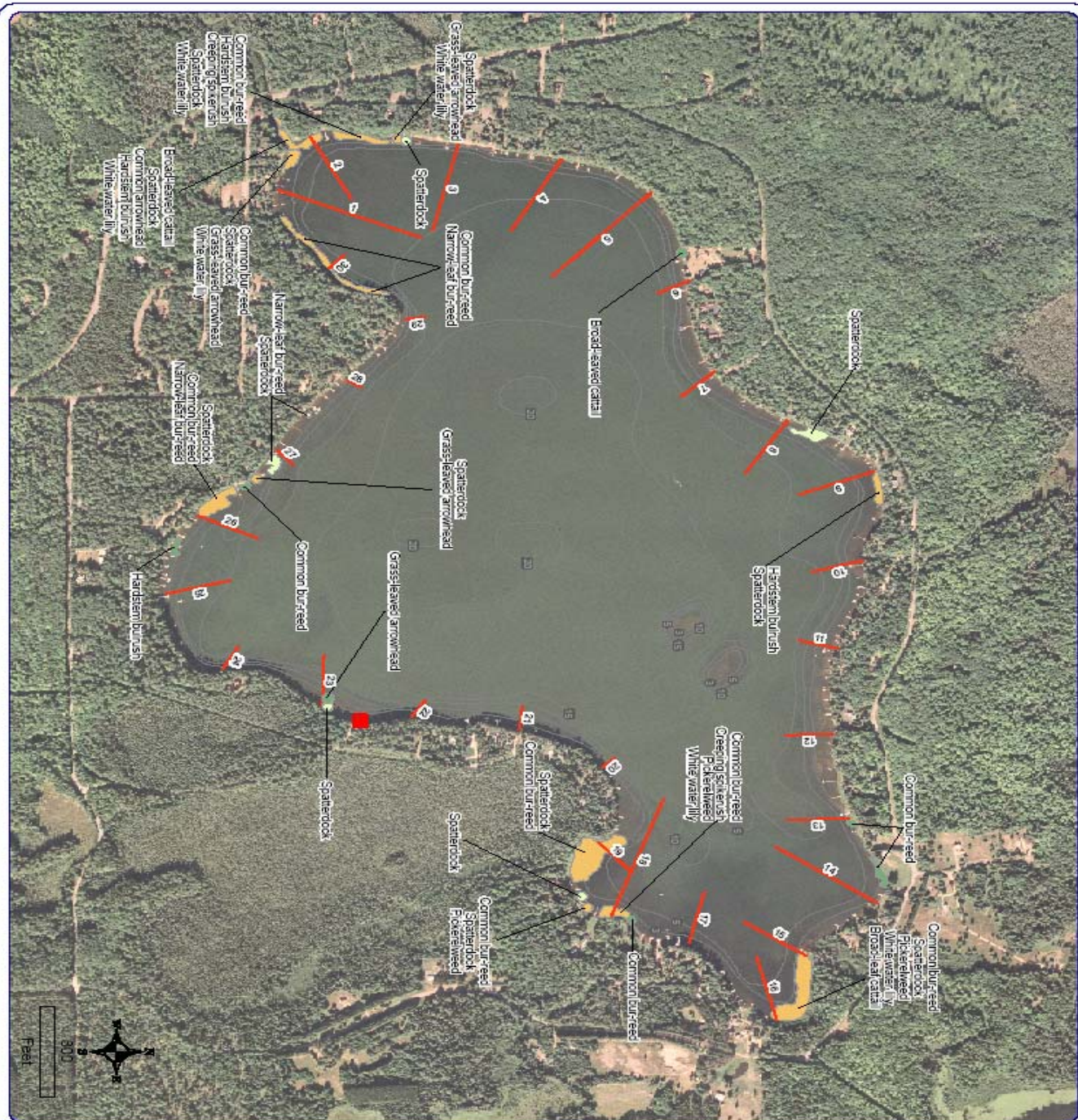
Vilas County AIS Coordinator



Trumpeter Swans on Lost Lake

Inside this issue:

Color Topographical Map of Lost	2
President's Message	3
Important Dates	5
Membership Form	7
History of Vandervort Field	8

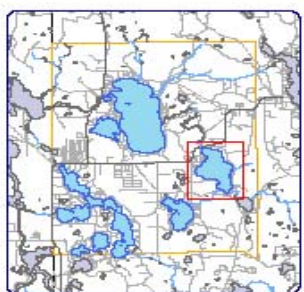


Map 7

Town of Saint Germain
Aquatic Plant Study

Lost Lake
Vilas County, Wisconsin

Aquatic Plant Communities & Transect Locations



Extent of large map shown in red.

Legend

- Survey Transect Location
- Small Plant Communities**
 - Emergent
 - Floating-leaf
 - Mixed Floating-leaf & Emergent
- Large Plant Communities**
 - Emergent
 - Floating-leaf
 - Mixed Floating-leaf & Emergent
- Public Boat Landing

Sources:
Rouse & Hyatt, WDAE
Aquatic Plant Survey, Ontario, 2004
Chlorophyll *a*, MWP, 2005
Map Date: October 25, 2005

Onterra LLC 133 South Bayshore Drive
Suite 200
Oconomowoc, WI 53151-1868
www.onterra-llc.com

Lake Management Planning

A Message from The President



Hello to one and all. Guess what...? Rumor has it that the ice is finally gone from Lost lake. It was almost gone once but came back. The stubborn winter has finally lost its grip--I hope! So cheers to 2007 and another summer of fun on Lost Lake. Soon the migration will start as we rediscover our homes and clean up all that mother nature has left us since we left in 2006. Also a "hardy" hello to all the "full timers" that never left the lake. I was up Feb 5-12th and -28 temperatures tended to keep me inside. Even with the best intentions of trying outdoor activities, I could not stay outdoors for very long. My running got cut down to running to my truck and back. With the change of seasons we are also going to experience change; I think all for the better. First, we need to pat each other on the back for a great job with the volunteer hours total of last year. Together we can try to save Lost Lake from the invasive species that are as close to us as Little Saint Germain Lake. So this year I will again ask everyone to be vigilant when enjoying yourself on the lake, on your pier, or by your boat. Please look for invasive species, and if you see anything suspicious contact any of us on the board (see phone numbers and addresses in newsletter). Also, we will need to once again submit volunteer hours so that we can remain a part of our St. Germain Lakes Association. This is vital, because without their help we will be fighting alone and without the power of the whole group. I just learned of some other possible great news; the Town of

St.Germain has submitted an application for a grant to build a new fence around Vandervort park. Believe it or not, it is from "Hamburger Helper"! So cross your fingers, and if it happens we will have a HH dish or two at the picnic. Lastly, for members and those considering membership, please send in your dues as promptly as possible because we need the funds for stocking fish in the lake, newsletters, and other community related activities.

To protect your favorite lake, every time you go boating and get ready to leave a launch with your boat make sure to:

See you on Lost lake.

INSPECT your boat, trailer and equipment

Best regards,

REMOVE visible aquatic plants, animals, and mud.

Jack Peil

DRAIN water from your boat, motor, bilge, live wells, and bait containers.

President, Lost Lake Community Club

DISPOSE of leftover bait in the trash, not in the water.

RINSE your boat and recreational equipment with hot water OR DRY for at least five days.



Lost Lake Association Officers and Board Members:

- **Jack Peil, President** jackpeil@charter.net 775.827.4077 home 542.3418 lake 2434 Lost Lake Dr. W SAYNER, 54560
 - **Mel Schultz, Vice-President** kam61155@aol.com 309.452.3179 home 542-3835 lake
 - **Julie Greely, Secretary** juliann323@aol.com 920.434.3229 home 542-4191 lake
- **Linda Heeler, Treasurer** qccabins@isol.net 920.773.2667 home 542-3740 lake 8095 Lost Lake Dr. N
 - **Gary Heeler, Director/Dam Keeper** qccabins@isol.net 8095 Lost Lake Dr. N
- **Tammy Novak, Director/Newsletter Publisher** pies1210@yahoo.com 312.951.6909 home 542.9325 lake

Please feel free to contact anyone with questions, suggestions or any for other information regarding the lake. Pictures, articles, and content suggestions are also welcomed and appreciated for the newsletter.

SAYNER-ST. GERMAIN
FISH AND WILDLIFE CLUB, INC.

BOX 214
 ST. GERMAIN, WISCONSIN 54558

March 17, 2007

To: Lake Districts, Associations and Clubs

From: Richard P. Polaski, Chairman
 Lakes Improvement Committee
 Sayner-St. Germain Fish & Wildlife Club

Subject: 2007 Lakes Improvement Funding

The Sayner-St. Germain Fish and Wildlife Club, Inc. will again administer the Lakes Improvement Committee funding for the year 2007. Partial funding has already been received from the Town of St. Germain in the amount of \$3,219.00 with the balance due in September for a total of \$5,000.00. We have requested that the St. Germain Chamber of Commerce continue their generous donation of \$1,000.00 as in the past.

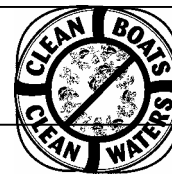
Last year (2006) the involved lake groups provided \$5,300.00 in contributions, the Town of St. Germain provided \$5,000.00 and the Chamber of Commerce provided \$1,000.00. These funds were used to improve signage at the newly revamped Found Lake boat landing. The remainder of the funds were carried over to this year (2007) and are earmarked for stocking, improving fish habitat, new signage, web site development, lake studies, navigational aids and the control of Aquatic Invasive Species.

We have already received a contribution from Little St. Germain Lake in the amount of \$1,000.00. The guidelines for participation in this program will remain the same as they were last year. A donation of \$250.00 minimum up to a maximum of \$1,000.00 is required and must be sent to the Sayner-St. Germain Fish and Wildlife Club no later than Tuesday, May 1st, 2007. It is recommended that your group make the maximum contribution in order to receive the maximum allotment from the Town and Chamber funding.

Individual balance statements for each lake district, association or club are attached to this letter showing your ending balance for 2004, contributions and allotments for 2005 and 2006, amounts expended and you're ending balance for 2006. We are anticipating a similar allotment for 2007 as you have had it past years. If you have any questions regarding this letter or the attached statement please give me a call at (715)479-4718.

"A Non-Profit Organization"

Lost Lake News



Meetings are a great way to share information, voice opinions and enjoy a cold beverage with your neighbors. Your participation is greatly needed and appreciated.

SAVE THE DATES:

Lost Lake Meeting Dates and Events:

- Sunday, May 27, Meeting 1PM, BALLPARK
- Sunday, June 24, Meeting 1PM, BALLPARK
- Sunday, July 1, CORN ROAST
- Wednesday, July 4, BOAT PARADE 1PM, MEET AT THE BALLPARK
- Sunday, July 22, Meeting 1PM, BALLPARK
- Sunday, August 5, Meeting and PICNIC

Look for the Annual Golf Outing To Be Announced Soon!

We encourage all lake residents to become members of the Sayner-St. Germain Fish and Wildlife Club, Inc. Membership is \$10 a year and provides you with newsletters and monthly meetings with informational speakers on the subjects of wildlife, fish, and day-to-day living in the Northwoods.

A picnic and Christmas party are also part of our charm. Membership applications can be found at the St. Germain Chamber of Commerce. Please consider joining this interesting group and keeping in touch with what is going on in our local area.

Lost Lake Account:

March 17, 2007

12/31/2004	\$2,070.00(2004)Balance Brought Forward	
04/27/2005	<u>+1000.00</u> (2005)Lake Contribution	
	3070.00	Balance
10/26/2005	<u>+1060.00</u> (2005) Town and Chamber Allotment	
	4130.00	Balance
01/12/2006	<u>+1000.00</u> (2006) Lake Contribution	
	5130.00	Balance
09/20/2006	<u>\$1060.00</u> (2006) Town and Chamber Allotment	
12/31/2006	\$6190.00 Balance Carried Forward to 2007	

We would expect the Town and Chamber Allotment to be very close to what it was last year (2006). You will be notified of the exact amount when received.

** In March of 2007, an additional \$1000.00 was sent to the Fish and Wildlife Club. This amount is not reflected in the above statement.

Lost Lake News



What Was That Howling at the Moon?



Yes, wolves have been spotted in the area, but that is nature at work. Wolves typically pose no threat to humans and have been in the area in the past. It is perhaps a reminder that as lake residents we are just a part of the history of the land and the true residents are its natural inhabitants.

Club Membership, Dues and Newsletters

Membership is a great way to show support for our lake community and it also allows for voting rights in the annual election of officers. Membership for the 2007 season can now be submitted to Linda Heeler. If you could please send in the form along with your current information, we would greatly appreciate it. We will arrange for drop-off times for dues payment as well. We have also decided to continue to send newsletters out to all paid members from last year, however, going forward, newsletters will only be sent to paying members. Please remember that the newsletters provide important information regarding our lake, community projects such as AIS lake volunteers as well as social events and meetings. Again, all paid members from last year will continue to receive the newsletter and all current paid members will receive them as well.

Membership dues are due June 1, 2007

You may drop off your dues and membership forms at the Heeler Lake Residence, 8095 Lost Lake Dr. N

Please take the time to communicate your concerns, questions, and ideas on the dues forms. They are all read by the board and every comment is considered important.

Also, if you are no longer a lake resident, please contact a board member so that your name can be removed from the list.

History Page

This fun and informative addition of our newsletter has met with overwhelming success. Please consider submitting your own family's history on Lost Lake. With new generations enjoying our lake every year, it is so interesting to hear stories of the past and see how our wonderful lake has given joy to so many people.

Anyone interested in submitting a history, please contact Tammy Novak.



Lost Lake Community Club Membership Form

“Improvement, Promotion, Progress and Beautification”

Some things to consider as you fill out this form for the 2007 year:

The majority of the money raised through membership is thrown into the lake, literally!

Your money is used to stock fish and escrowed for future lake projects such as getting rid of invasive species (hopefully never).

By becoming a member, you are contributing to the health and life of our precious lake. Only members are allowed to vote, by becoming a member you are also part of the decision making processes. We also encourage membership so that our database is current and information regarding our lake can be communicated in a timely manner. Please consider a donation as well as dues, your contributions will only enhance the care of our lake.

We are also interested in trying to communicate in the most effective way. We would appreciate it if you would take the time to fill out the following questionnaire. Since some members are at the lake all summer, it is essential that we decide how to send out information while members are away from their permanent address. Ideally we would like to create an email database and use it as a primary communication tool. Any suggestions are welcome and we encourage any ideas to better our club.

Full Name _____

Mailing Address _____

Lake Address _____

Summer Phone # _____ Winter Phone # _____

Email address _____ (Will not be sold or shared outside of club)

Enclosed is my check for \$20 Regular Dues / \$15 Associate Dues (for those who own property more than 1 mile from the lake) / \$25 Business or Resort Dues

Enclosed is an additional amount of _____ for donation to the Lost Lake Community Club.

(Please write DONATION on your check)

Preferred method to receive newsletters, correspondence:

US Postal Service _____ Email _____ (This is preferable because of the \$ saved)_

Best way to correspond in the summer: _____ (Please provide which address is best)

Please make checks payable to:

Lost Lake Community Club

Send To:

Linda Heeler

9420 Spring Lake Dr.

Valders, WI 54245

Interests:

1. Aquatic Invasive Species (AIS) _____
2. Water Quality _____
3. Fishery _____
4. Habitat Maintenance _____

Any Other Suggestions, Concerns or Topics of Interest:



This regular feature of our newsletter will consist of stories told by Lost Lake homeowners.

It is a great way to get to know the history of the homes along with each family's personal discovery of our lake. We encourage everyone to contribute their stories along with any special pictures you may have. We are also using this as a small fundraiser for the lake community as well. We ask that you consider a \$20 donation along with your story.

We hope you enjoy this new feature and pass along these valuable memories to generations ahead.

Vandervort Field History

The ballpark on our lake's north shore, now known as Vandervort Field, was the brainchild of early Lost Lake resort owner John Vandervort. Vandervort came to Lost Lake along with several other early resort owners from the Tomah, Wisconsin area. John owned the Forest Primeval Resort across the bay from the present park. Vandervort's father, George, owned and operated the present day "Stonehouse," which at that time, was an American Plan resort called Forest Springs Lodge. Upon George's death in the early 1930s, John inherited the lodge, plus the sawmill that was on the site of the present day ballpark. John loved softball even though he never played the game. He removed the sawmill and established a ballfield which he named "Forester's Ball Park" after the first names of both of his father's and his resorts. Forester's Ball Park was one of the first in the Northwoods sporting such amenities as lights, electric scoreboard, public address system, showers, and a clubhouse for after-game snacks and refreshments. John didn't drink or smoke, so only soda and candy were sold in the store.

By the late 40s, Vandervort established daily 10 a.m. ballgames for his guests as well as those at other resorts. Sometimes 30 or more people would be on a side during these games. Vandervort would play loud music over his PA system before the games to alert players around the lake that the games were getting under way. Renditions of "Take Me Out to the Ballgame" and other 40s music was etched indelibly in many a lake resident's mind. In order to make money to run the park, John had players match up with a partner of equal playing ability. Once one partner was chosen, the other went to the opposing team. At the end of the game, the losing team's partner had to buy a soda for the winner. At that time soda was sold for a nickel, so many young kids would show up with two nickels tied in a handkerchief for safe keeping. If they were lucky and on the winning team, they would return home with the same change they came with.

Vandervort also sponsored a fast-pitch team that competed throughout the Northwoods. Because his guests weren't always of the caliber he needed to compete, he recruited skilled players from all over the Midwest to play ball at night and work at his resort during the day. But by the 1960s, fast-pitch was disappearing and slow-pitch leagues were taking over. He disbanded his recruiting efforts and sponsored a slow-pitch team made up of locals and vacationers that would play teams from Camp Eagle Crest (Found Lake), Eliasons Murmuring Waters (Oscar's Fireballers), and Weber's Wildlife. John Kuenn, a Wisconsin Coaches Hall of Fame coach, from Randolph, Wisconsin, served as the team coach. Coach Kuenn and his wife Laurel had purchased one of the Forest Primeval cabins.

After Vandervort's death in 1974, Marv Heeler, one of Vandervort's former ballplayers and employees, took over ownership of the ballpark. Following the wishes of Vandervort's will, Heeler turned the park over to the town of St. Germain to be used as a recreational park. A town meeting was held to determine if the town should take over the park. George Lorenz, owner of Camp Eagle Crest, was the town chairman at the time, so knowing the history of the ballpark, he and the rest of the town board accepted the donation. The only problem was the deteriorating condition of the bleachers and other ballpark structures. The town then tore down all the structures and put up a new backstop, outfield fence, and purchased portable bleachers. The new ballpark, now called Vandervort Park, was dedicated in 1983.

During the 1980s, the Lost Lake Community Club and its members started supporting the new park and its activities. They built a large shelter and picnic area on the west side of the park, purchased tables, and started sponsoring 10 a.m. ballgames again. Former Forester coach John Kuenn volunteered to run the now twice-weekly choose-up softball games. Only now, players on the losing team didn't have to purchase a soda for the winners. Also, a little-kids game was played before the adults to avoid having the 20-30 players on one side as was common in the Vandervort area.

John Kuenn continued running the games until his death in the summer of 1997. He unfortunately suffered a fatal heart attack while setting up for a ball game. A flagpole and flag in John Kuenn's memory were installed behind homeplate.

The ball games are now run by Gary and Linda Heeler. A new tradition they have started is asking for a volunteer or two to sing the national anthem before the start of the day's games.

Hearing the national anthem being sung by youngsters and seeing a ballpark full of players and spectators, an old-timer watching a recent game remarked, "If John Vandervort could see all this, he would be proud of what he started."

In addition to starting the ballpark, John Vandervort was involved in many other area activities. He served as town chairman, as a school teacher, and was also the person that coined the word "Colorama" to describe the beautiful fall colors in our Northwoods region.

